

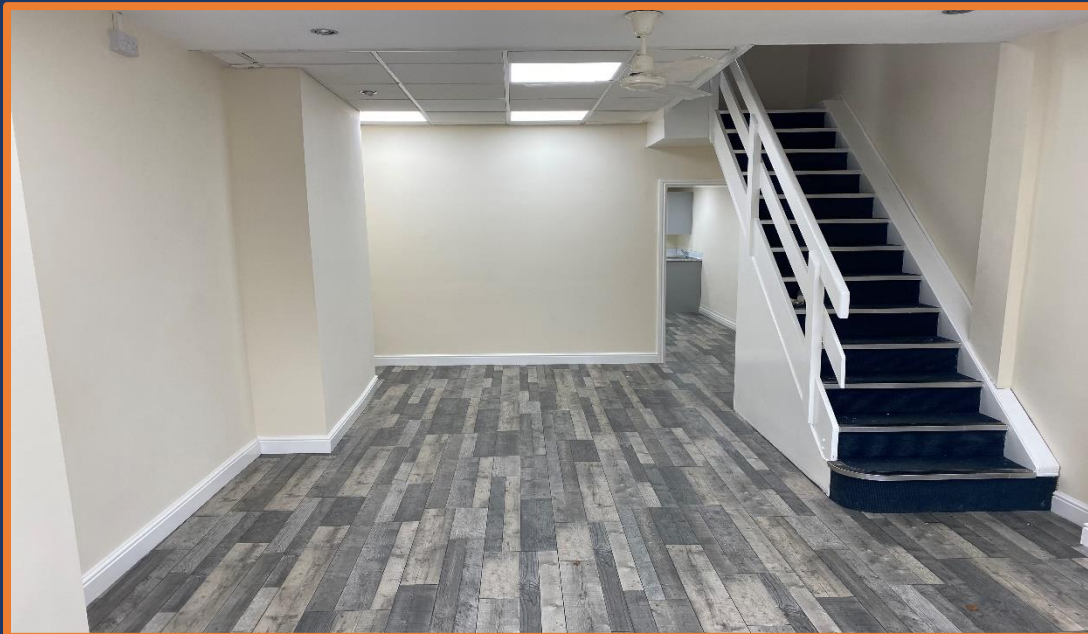
TO LET

6 Station Road, Great Sankey, Warrington, WA5 1RQ

- Superb Location in a popular commercial/Residential area
- Parking to the rear of the property
- Road side frontage
- 2.3 miles from Warrington Bank Quay Train Station



PHOTOS



LOCATION

The mid terrace commercial property is prominently located in the well-established commercial/residential area of Great Sankey. The property is 2.3 miles away from Warrington Town Centre, 2.3 miles away from Warrington Bank Quay Train Station, 2.75 miles away Warrington Central Train station and some 2.7 miles away from Warrington Bus Station.

DESCRIPTION

- Well-presented mid terrace commercial property
- Roadside frontage
- Substantial sized terraced property
- Electric roller shutter doors and windows
- Property suitable for a number of businesses (STP)
- 2.3 miles to Warrington Town Centre
- Close to amenities

LEGAL COSTS

- Each party to pay their own legal costs

TERMS OF LEASE

The premises are available by way of a Lease term from 3 years.

RENTAL

- £9,600 per annum exclusive of VAT

ENQUIRIES



Suite 1, Oak Tree Barn, Hatton Lane, Hatton, WA4 4BX



brad@readproperty.info



www.readproperties.co.uk



01925 213987