

# PRIME RETAIL UNIT TO LET

25 NORTHGATE STREET, CHESTER, CH1 2HA



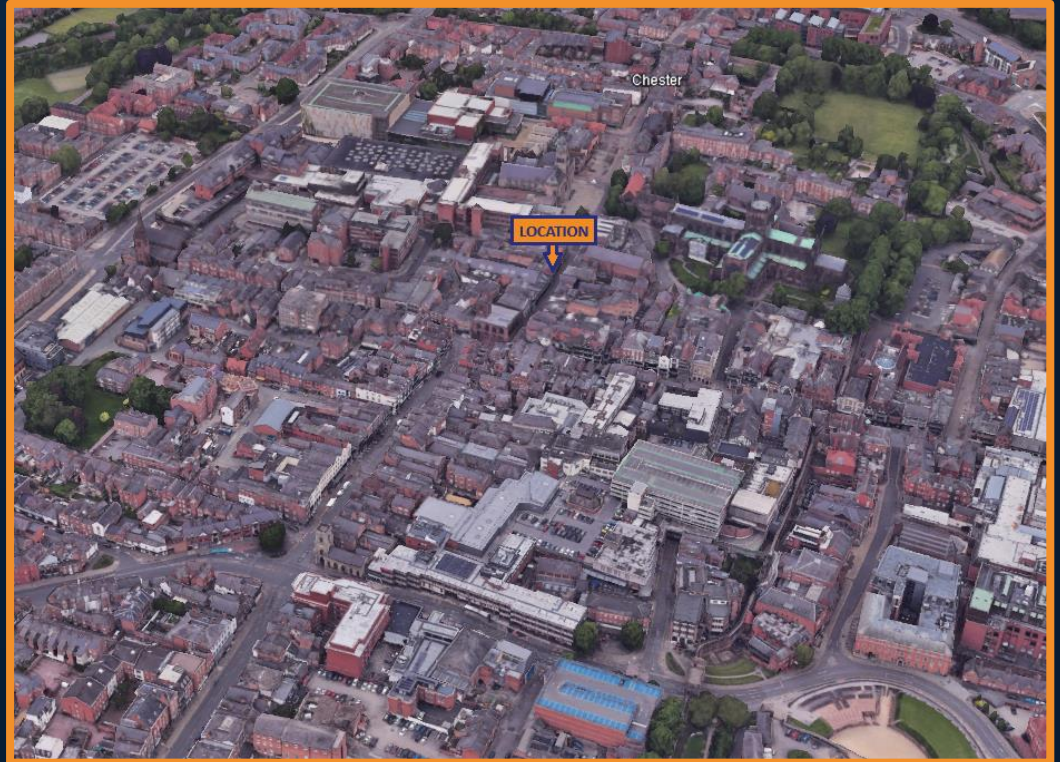


# LOCATION

25 NORTHGATE STREET, CHESTER, CH1 2HA

CHESTER IS A HISTORIC CATHEDRAL CITY WITH A LARGE AFFLUENT CATCHMENT POPULATION. THE CITY FURTHER BENEFITS FROM A LARGE NUMBER OF TOURISTS EACH YEAR, TO PROVIDE ONE OF THE NORTH WESTS LEADING RETAIL DESTINATIONS.

THE PROPERTY IS SITUATED FRONTING NORTHGATE STREET WITH SURROUNDING OCCUPIERS INCLUDING PRET A MANGER, OPTICAL EXPRESS, MANGO, THE WHITE COMPANY AND STARBUCKS.



# PHOTOS

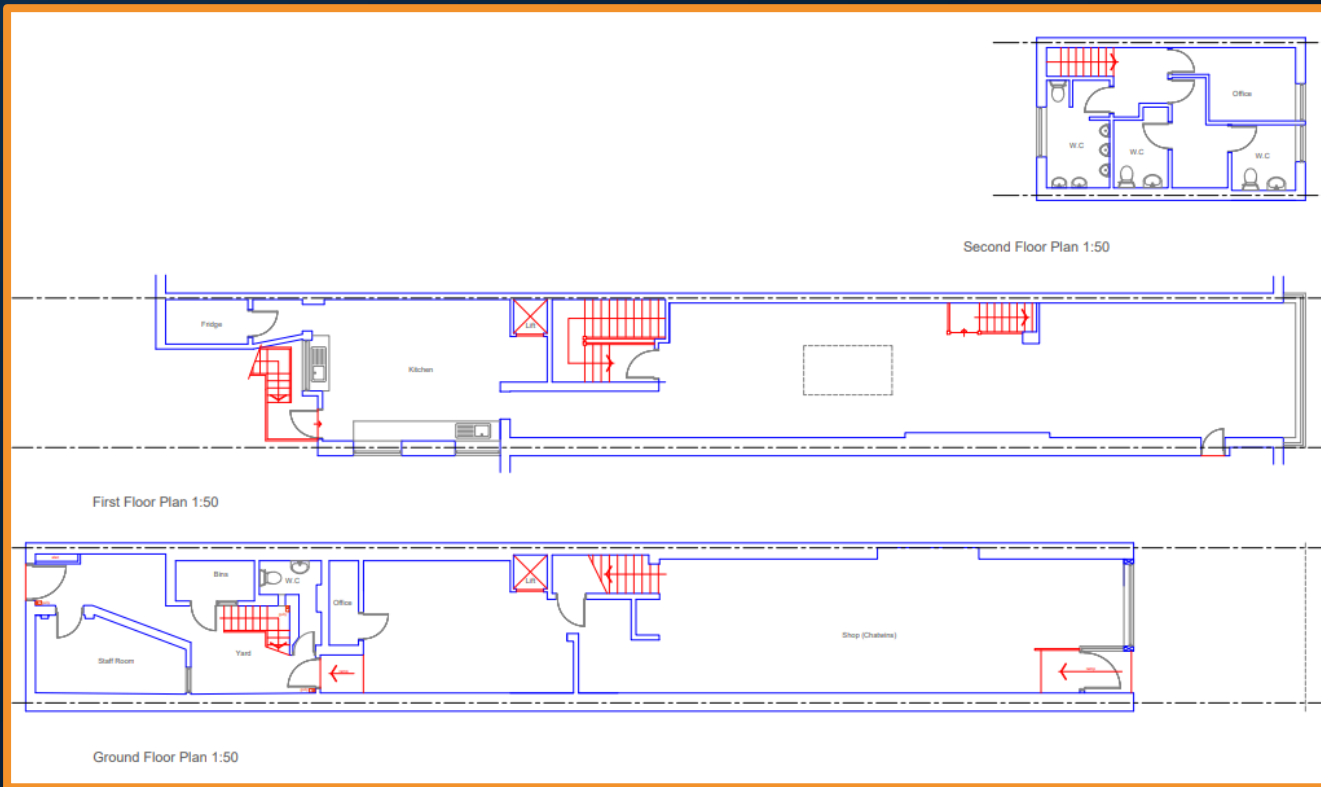


25 NORTHGATE STREET, CHESTER, CH1 2HA



# FLOORPLAN

25 NORTHGATE STREET, CHESTER, CH1 2HA



# DETAILS

25 NORTHGATE STREET, CHESTER, CH1 2HA



## DESCRIPTION

- PROMINENT LOCATION IN CHESTER CITY CENTRE
- SUITABLE FOR USE CLASS E AND SIMILAR
- ACCOMMODATION – UP TO CIRCA 2,909 SQ.FT
- POPULAR COMMERCIAL LOCATION
- PRIME HIGH STREET FRONTAGE
- CLOSE TO AMENITIES

## TERMS OF LEASE

- THE PREMISES ARE AVAILABLE AS A WHOLE OR ON A FLOOR BY FLOOR BASIS, DEPENDANT ON OPERATOR REQUIREMENTS FOR A TERM FROM 5 YEARS

## LEGAL COSTS

- EACH PARTY IS RESPONSIBLE FOR PAYING THEIR OWN LEGAL COSTS

## PRICE

- RENTAL OFFERS FROM £40,000 PER ANNUM, DEPENDANT ON THE AREA TO BE OCCUPIED. EXCLUSIVE OF VAT

# ENQUIRIES

25 NORTHGATE STREET, CHESTER, CH1 2HA



 SUITE 1, OAK TREE BARN, HATTON LANE, HATTON, WA4 4BX

 [JORDAN@READPROPERTY.INFO](mailto:JORDAN@READPROPERTY.INFO)

 [WWW.READPROPERTIES.CO.UK](http://WWW.READPROPERTIES.CO.UK)

 01925 213987



zoopla

