

TO LET

FIRST FLOOR, ORCHARD COURT, KNUTSFORD ROAD, ANTROBUS, CW9 6JW



LOCATION



FIRST FLOOR, ORCHARD COURT, KNUTSFORD ROAD, ANTROBUS, CW9 6JW

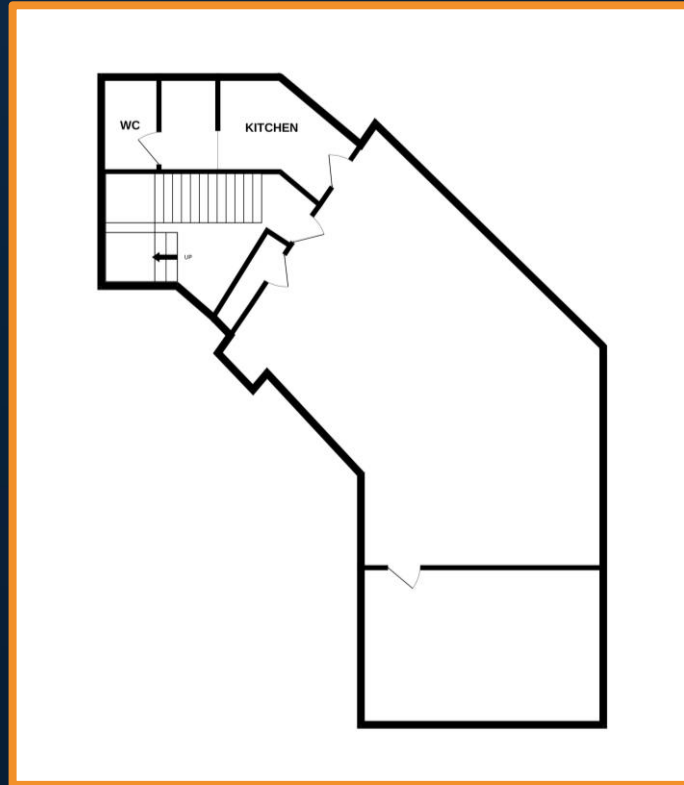
ORCHARD COURT IS LOCATED ON KNUTSFORD ROAD IN ANTROBUS, A VILLAGE NEAR NORTHWICH IN CHESHIRE. THE SURROUNDING AREA IS CHARACTERIZED BY RURAL LANDSCAPES, WITH PROXIMITY TO LOCAL AMENITIES IN NORTHWICH, INCLUDING SHOPS, SCHOOLS AND RECREATIONAL FACILITIES. THE LOCATION ALSO BENEFITS FROM GOOD TRANSPORTATION LINKS, WITH ACCESS TO MAJOR ROADS CONNECTING IT TO NEARBY TOWNS AND CITIES.



FLOORPLAN



FIRST FLOOR, ORCHARD COURT, KNUTSFORD ROAD, ANTROBUS, CW9 6JW



DETAILS



FIRST FLOOR, ORCHARD COURT, KNUTSFORD ROAD, ANTROBUS, CW9 6JW

DESCRIPTION

- PROMINENT LOCATION IN ANTROBUS, NORTHWICH
- FIRST FLOOR ACCOMMODATION – 865 SQ.FT
- ROADSIDE FRONTAGE
- SUITABLE FOR OFFICE SPACE AND SIMILAR
- CLOSE TO AMENITIES

LEGAL COSTS

- EACH PARTY IS RESPONSIBLE FOR PAYING THEIR OWN LEGAL COSTS

TERMS OF LEASE

- PREMISES AVAILABLE BY WAY OF A NEW LEASE FOR A TERM FROM 3 YEARS

RENTAL

- £15,570 PER ANNUM (WE UNDERSTAND THERE IS NO VAT PAYABLE). THIS IS AN ALL-INCLUSIVE RENTAL SUCH TO INCLUDE HEATING AND ELECTRIC. THE TENANT WILL BE RESPONSIBLE FOR ALL OTHER BILLS AND OUTGOINGS

ENQUIRIES



FIRST FLOOR, ORCHARD COURT, KNUTSFORD ROAD, ANTROBUS, CW9 6JW

 SUITE 1, OAK TREE BARN, HATTON LANE, HATTON, WA4 4BX

 JORDAN@READPROPERTY.INFO

 WWW.READPROPERTIES.CO.UK

 01925 213987



zoopla

