

OFFICES TO LET

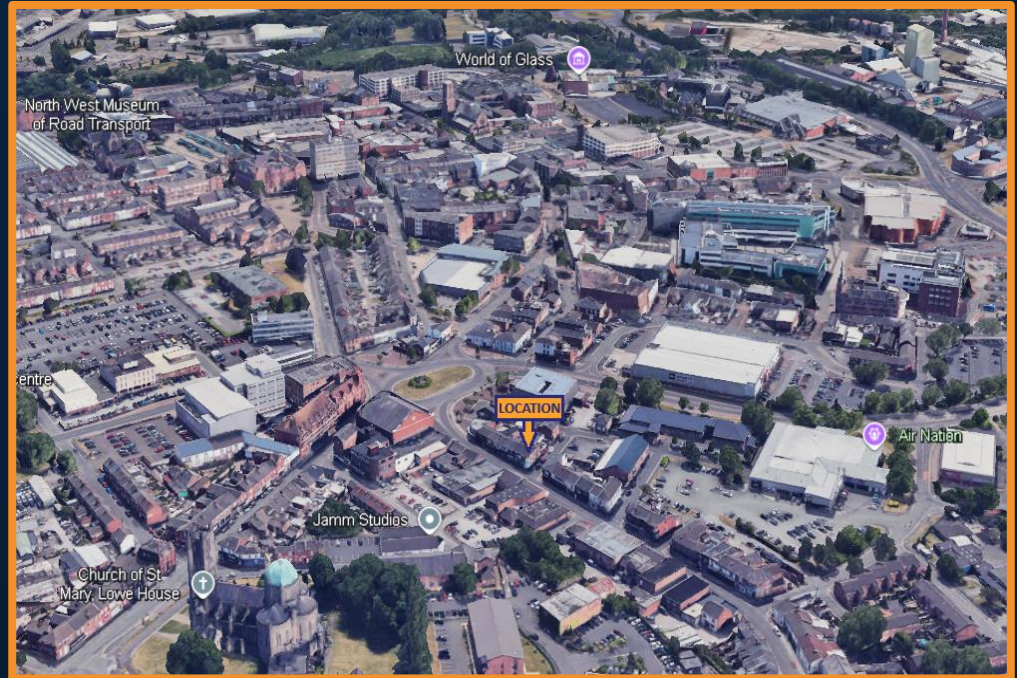
FIRST FLOOR, 27-29 DUKE STREET, ST. HELENS, WA10 2JE



LOCATION

FIRST FLOOR, 27-29 DUKE STREET, ST. HELENS, WA10 2JE

THE PREMISES IS SITUATED ON DUKE STREET IN A POPULAR COMMERCIAL AREA NO MORE THAN 0.3 MILES FROM THE HEART OF ST. HELENS TOWN CENTRE. THE PROPERTY BACKS ONTO A RESIDENTIAL ESTATE AND IS IN CLOSE PROXIMITY TO NATIONAL OCCUPIERS SUCH AS SPORTS DIRECT, LIDL, ASDA AND MCDONALDS



PHOTOS



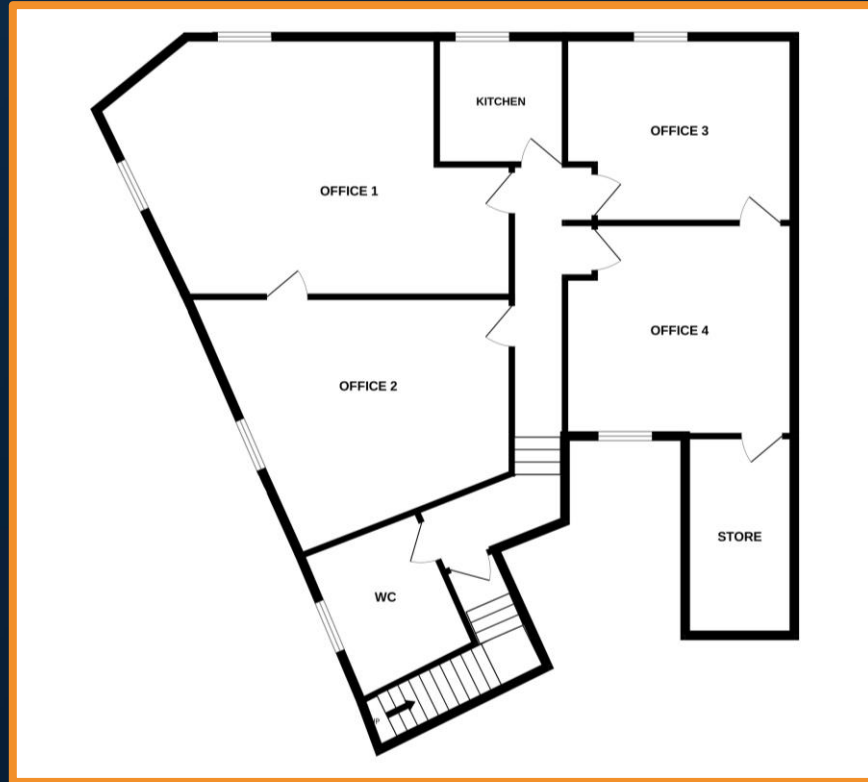
FIRST FLOOR, 27-29 DUKE STREET, ST. HELENS, WA10 2JE



FLOORPLAN



FIRST FLOOR, 27-29 DUKE STREET, ST. HELENS, WA10 2JE



DETAILS



FIRST FLOOR, 27-29 DUKE STREET, ST. HELENS, WA10 2JE

DESCRIPTION

- PRIME LOCATION IN THE HEART OF ST. HELENS TOWN CENTRE
- RECENTLY REFURBISHED OFFICES
- PROMINENT FRONTAGE
- POPULAR COMMERCIAL LOCATION
- 3 CAR PARKING SPACES
- CLOSE TO AMENITIES
- EXCELLENT TRANSPORT LINKS

LEGAL COSTS

- EACH PARTY IS RESPONSIBLE FOR PAYING THEIR OWN LEGAL COSTS

TERMS OF LEASE

- OFFICES AVAILABLE BY WAY OF A NEW LEASE FOR A TERM FROM 2 YEARS

ACCOMMODATION

- SUITE 1 – 328 SQ.FT
- SUITE 2 – 231 SQ.FT
- SUITE 3 – 161 SQ.FT
- SUITE 4 – 269 SQ.FT PLUS STORAGE

PRICE

- £400 PER WEEK EXCLUSIVE OF VAT

ENQUIRIES



FIRST FLOOR, 27-29 DUKE STREET, ST. HELENS, WA10 2JE

 SUITE 1, OAK TREE BARN, HATTON LANE, HATTON, WA4 4BX

 JORDAN@READPROPERTY.INFO

 WWW.READPROPERTIES.CO.UK

 01925 213987



zoopla

