

# LAND FOR SALE

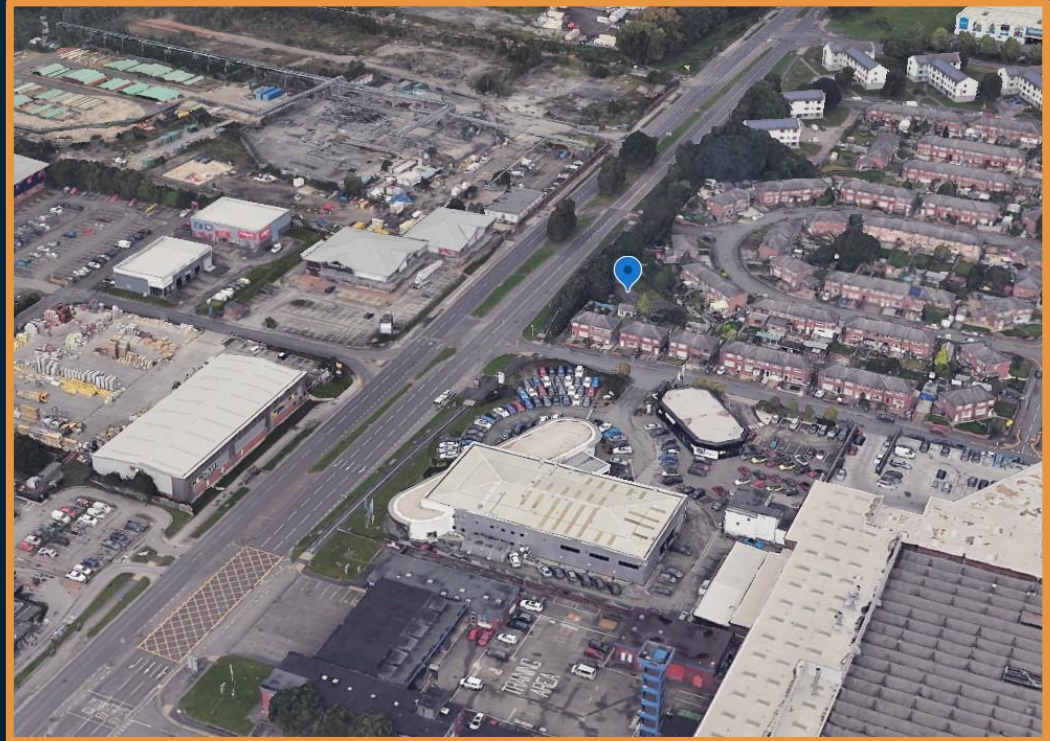
CORBET STREET, WARRINGTON, WA2 8BW



# LOCATION

CORBET STREET, WARRINGTON, WA2 8BW

**THE LAND IS SITUATED JUST OFF THE A49 NORTH OF WARRINGTON. SITUATED JUST 1.7 MILES SOUTH OF THE M62 MOTORWAY, THIS PROVIDES EXCELLENT TRANSPORT LINKS TO MANCHESTER, LIVERPOOL AND SURROUNDING MOTORWAYS. SURROUNDING OCCUPIERS INCLUDE EDDIE STOBART, HALLIWELL JONES BMW, EAGLE PARK, RIX MOTORS AND GREAT BEAR.**



# PHOTOS

CORBET STREET, WARRINGTON, WA2 8BW



# TITLE PLAN

CORBET STREET, WARRINGTON, WA2 8BW



# DETAILS

CORBET STREET, WARRINGTON, WA2 8BW



## DESCRIPTION

- SITE ACCOMMODATION – CIRCA 0.12 ACRES
- ROADSIDE FRONTAGE
- GATED ACCESS
- HARD STANDING
- SUITABLE FOR MULTIPLE USES SUBJECT TO THE RELEVANT PLANNING BEING ACHIEVED
- SHARED ACCESS WITH TITLE CH268300
- EXCELLENT TRANSPORT LINKS
- CLOSE TO AMENITIES

## LEGAL COSTS

- EACH PARTY IS RESPONSIBLE FOR PAYING THEIR OWN LEGAL COSTS

## TERMS OF LEASE

- FREEHOLD

## PRICE

- OFFERS IN EXCESS OF £50,000 EXCLUSIVE OF VAT

# ENQUIRIES

CORBET STREET, WARRINGTON, WA2 8BW



 SUITE 7, OAK TREE BARN, HATTON LANE, HATTON, WA4 4BX

 [JORDAN@READPROPERTY.INFO](mailto:JORDAN@READPROPERTY.INFO)

 [WWW.READPROPERTIES.CO.UK](http://WWW.READPROPERTIES.CO.UK)

 01925 213987



zoopla

